

NOTE:

- 1.INSULATOR:HIGH-TEMP THERMOPLASTIC UL94V-0
COLOR:NATURAL OR BLACK
- 2.CONTACT:COPPER ALLOY
PLATING:ALL PLATED OVERALL NICKEL 50~100u"UNDER PLATED
- 3.FITTING NAIL:COPPER ALLOY
△ PLATING:100~160u" TIN PLATED OVERALL,
50~100u" NICKEL UNDERPLATED.

△△△ORDER INFORMATION: 4260K-X XX N - X 0.2 X

PACKING R:PLASTIC REEL △
L:PAPER REEL
E:TUBE △

△COLOR 0:NATURAL
△2:BLACK

△REEL 0:PITCH 8
△ 1:PITCH 8 PACKAGE REVERSE
△ 2:WIDTH DIFFERENT FROM "0:"
△△ 4:PITCH 12 PACKAGE REVERSE
△ 5:PITCH 12
△△ 6:WIDTH DIFFERENT FROM "1:"

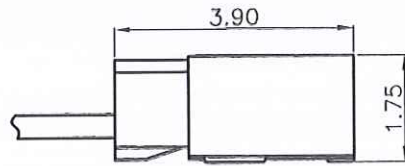
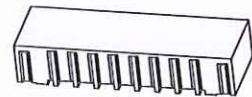
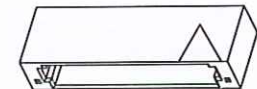
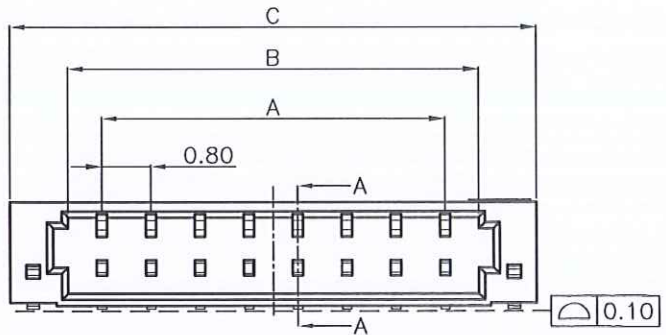
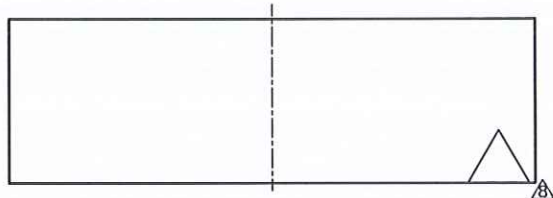
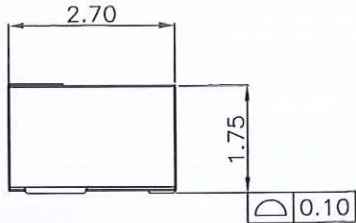
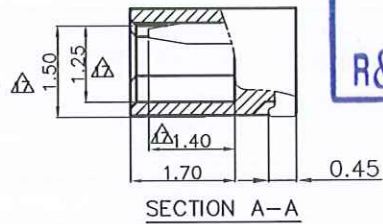
STANDARD

PIN NO.

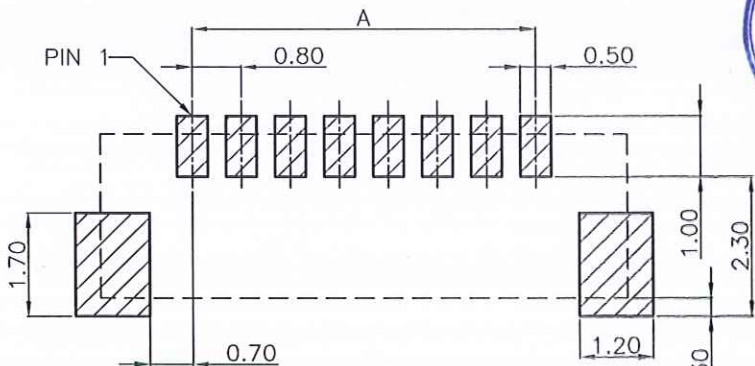
- PLATING E:100~160u" TIN PLATED OVERALL,
50~100u" NICKEL UNDERPLATED.
- Q:100~160u" MATTE-TIN PLATED OVERALL,
50~100u" NICKEL UNDERPLATED.
- F:GOLD FLASH PLATED OVERALL, △
50~100u" NICKEL UNDERPLATED.
- △△J:CONTACT AREA 10u"(MIN)GOLD PLATED OVERALL,
OTHER AREA GOLD FLASH
50~100u" NICKEL UNDERPLATED.
- △H:CONTACT AREA 15u"(MIN)GOLD
OTHER AREA GOLD FLASH

0.8 WTB SMT R/A TYPE SINGLE ROW (HALOGEN-FREE)

ENTERY INDUSTRIAL CO., LTD.
JUL 30. 2015
R&D D.C.C. ISSUED



PIN NO.	A	B	C	D
02	0.80	1.90	3.78	3.04
03	1.60	2.70	4.58	3.84
04	2.40	3.50	5.38	4.64
05	3.20	4.30	6.18	5.44
06	4.00	5.10	6.98	6.24
07	4.80	5.90	7.78	7.04
08	5.60	6.70	8.58	7.84
09	6.40	7.50	9.38	8.64
10	7.20	8.30	10.18	9.44
11	8.00	9.10	10.98	10.24
12	8.80	9.90	11.78	11.04
13	9.60	10.70	12.58	11.84
14	10.40	11.50	13.38	12.64
15	11.20	12.30	14.18	13.44
16	12.00	13.10	14.98	14.24
17	12.80	13.90	15.78	15.04
18	13.60	14.70	16.58	15.84
19	14.40	15.50	17.38	16.64
20	15.20	16.30	18.18	17.44



ASSEMBLY LAYOUT

CUSTOMER		恩得利工業股份有限公司 ENTERY INDUSTRIAL CO., LTD.	
GENERAL TOLERANCE UNLESS OTHERWISE SPECIFIED		DRAWN Juno APR-24-2008	
X.X ±0.25		CHECKED	
X.XX ±0.15		APPROVED JUN 29 2008	
X.XXX ANG. ±2°		TITLE: 0.8 WTB SMT R/A TYPE SINGLE ROW	
SHEET 1/1		UNIT MM SCALE 8:1 SIZE A4 REV W	

△	REVISIONS	CHK	DATE
△	RE201508015	Ceres	07/29/15
△	RE201503005	Juno	04/15/15
△	RE201308003	Juno	08/16/13
△	RE201305002	Juno	05/03/13
△	REN130415	Juno	04/29/13
△	RE201303023	Juno	04/11/13